

The Role of Cross-Sector Partnerships in Child Health: The Herkimer County Children's Center Initiative

Andrea Blowers, BA, MPH; Christina Cain, BS, BSN, MS, MS, RN; Chris Connolly, BA, MA; and Nancy Wind, BA



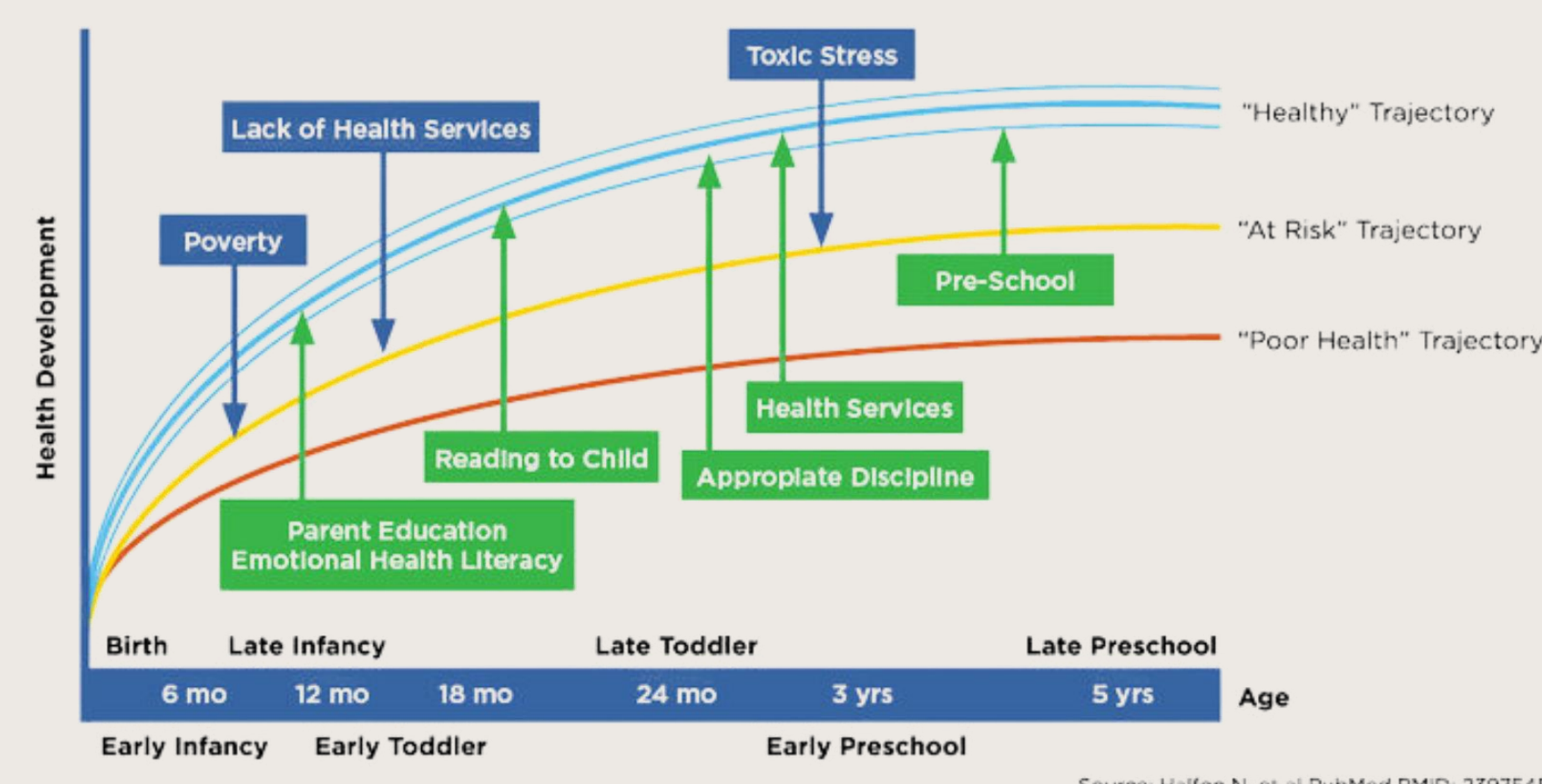
Introduction

While existing social, health, and education systems offer opportunities to support local families, their efforts are often fragmented or limited in rural settings. In response, Herkimer County Public Health convened stakeholders from diverse sectors, developing collaborative programs and interventions to fill these gaps while simultaneously building cross-sectoral bridges for streamlined service delivery to children. Together, partners from various fields envisioned the Children's Center as a self-sustaining hub, providing social, emotional, physical, and mental health services. By promoting collaborative partnerships and data-driven interventions, this cross-sectoral approach aims to identify at-risk children early on and integrate supportive systems for healthy development. As the demand for appropriate children's services grows, the Center presents a promising solution to enhance children's well-being and developmental outcomes in rural communities, setting them toward a healthier and more equitable future.

Objective: To facilitate optimal early childhood social-emotional wellness through cross-sectoral collaborations that fill the gaps in rural service delivery.

Childhood Social-Emotional Wellness

There is growing evidence that many observed health disparities are rooted in early childhood. During the first eight years of a child's life, the brain undergoes rapid growth, driven by a child's acquisition and integration of skills across many developmental domains. It is important to note that child development includes not only physical development but also emotional, behavioral, cognitive, language, and general learning competencies.

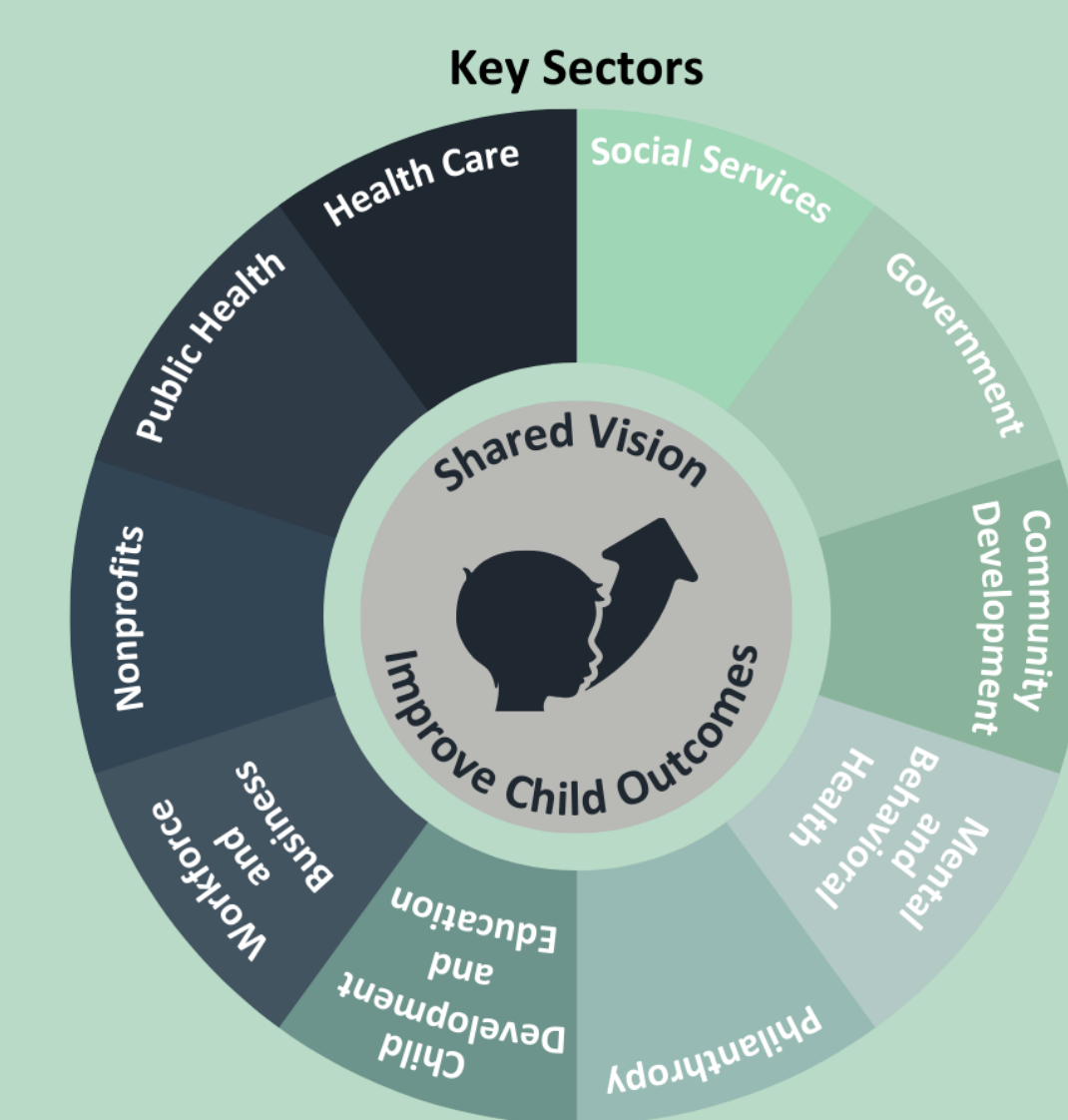


Life Course Perspective

Early childhood stress can disrupt neurologic, metabolic, and immunologic systems, leading to poorer developmental outcomes (3). Compounding the issue, research suggests that chronic stressors in early childhood, such as poverty, have a significant impact on lifetime learning, health, and economic well-being (1). Conversely, protective factors such as responsive caregiving relationships, supportive community environments, and coordinated services have been shown to mitigate the impact of these adverse circumstances, promoting an optimal trajectory. Ultimately, the cumulative impact of early experiences, positive and negative, can have a profound and cascading effect on the lifelong outcomes of children.

Cross-Sectoral Approach

Although existing systems provide opportunities to support responsive relationships and environments for children, efforts by these systems are often fragmented or limited in rural settings. As such, Herkimer County Public Health convened stakeholders from diverse sectors to strategize collaborative programs and interventions to fill these gaps while simultaneously building cross-sectoral bridges and increasing access to child health services.



Assessments for Targeted Interventions

Stakeholders brought together data and insights from various sectors, providing a comprehensive understanding of the community's challenges and opportunities. This ensures that services are tailored to the community's needs and optimizes the use of resources, maximizing their impact.

A Vision to Streamline Service Delivery

Stakeholders advocated for a Children's Center to act as a hub of social, emotional, physical, and mental health service delivery for children. Leveraging these existing cross-sectoral relationships facilitates the early identification of at-risk children and integrates systems that can support healthy development.

Herkimer County Children's Center

The Herkimer County Children's Center is designed to fill the gaps in rural service delivery by integrating a wide range of child services in one strategic location. As such, the Center will provide developmentally appropriate educational and social experiences while bridging the gap between families and community resources dedicated to child development, socialization, health, and education. The need to address these disparities has never been greater as the demand for appropriate children's services in Herkimer County is rapidly growing.

Centrally located, the Center will coincide with one of the county's most densely populated and highest-need areas.

The Valley Corridor and surrounding areas have exceedingly high early childhood poverty rates ranging from 35%-68% (2).



Conceptual designs of the Herkimer County Children's Center have been presented to local legislators and are currently under review for approval.

»»» The targeted services that will be provided at the Center are intensive early intervention strategies to mitigate the disparities families in Herkimer County experience while alleviating the social and economic impact these public health concerns have on society.

Conclusion

The Herkimer County Public Health's initiative to establish the Children's Center represents a significant step forward in addressing the critical issue of early childhood development in rural communities. The vision of the Center as a hub for various child services is a holistic response to the fragmented and limited services typically found in rural settings. By centralizing services and creating a self-sustaining model, the Center addresses the immediate needs of at-risk children and streamlines service delivery, promoting early identification and intervention. As the demand for children's services continues to grow, this initiative is poised to play a pivotal role in creating a conducive environment for optimal social-emotional wellness and development throughout the region.

References

- Institute of Medicine and National Research Council (2015). Transforming the workforce for children birth through age 8: A unifying foundation. Washington, DC: National Academies Press.
- Herkimer County Public Health & Basset Research Institute's Mohawk Valley Population Health improvement Program. (2022). Community Health Needs Assessment. <https://www.herkimercounty.org>
- Shonkoff, J. P., Garner, A. S., Siegel, B. S., Dobbins, M. I., Earls, M. F., Garner, A. S., McGuinn, L., Pascoe, J. & Wood, D. L. (2012). The lifelong effects of early childhood adversity and toxic stress. *Pediatrics*, 129(1), e232-e246. <https://doi.org/10.1542/peds.2011-2663>



Comprehensive Services

- ➔ Childcare
- ➔ BOCES Pre-K Classroom
- ➔ Children's Mental Health Clinic and Outpatient Services
- ➔ Early Intervention Therapy Room
- ➔ Mohawk Valley Diaper Bank
- ➔ System of Care
- ➔ Developmental Pediatric Services
- ➔ UCP Developmental Playgroup
- ➔ Childbirth Classes
- ➔ Preceptorship Site for Herkimer College
- ➔ Connected Community Schools Hub
- ➔ Lactation Counseling and Support
- ➔ EFNEP Food Nutrition Education
- ➔ Local Food Access Support