



Partnerships for Maternal Child Health: Perinatal and Infant Community Health Collaborative in Tompkins County



Dorota Kossowska, Public Health Fellow

Marie Joy B. Arguillas, Graduate Public Health Fellow

Background:

In April 2022 Tompkins County Whole Health (TCWH) received a 5-year Perinatal and Infant Health Community Collaborative (PICHC) grant to improve maternal and infant health outcomes in Tompkins County. The grant targets high-need, low income, Medicaid individuals and their families. Community Health Workers (CHWs) are the primary facilitator of this grant, by providing support to clients through home visits.

Goals:

Establish partnerships to:

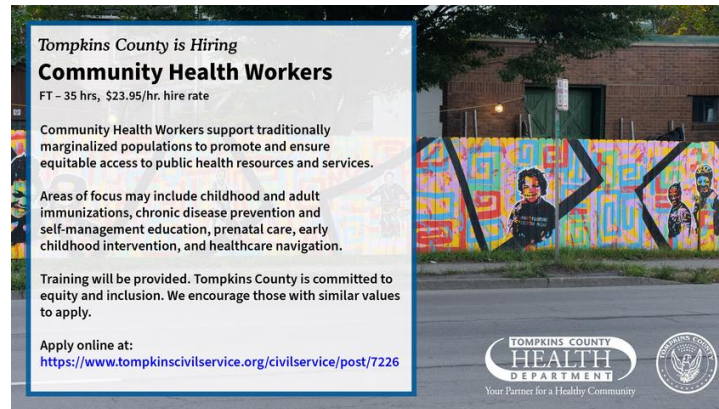
1. Increase referrals to the PICHC program
2. Better coordinate care for PICHC clients.

Strategies:

- Community partner workshops with PICHC program updates
- Community Cafe at local library
- Outreach events focused on rural and minority populations
- Meet and Greets with Community Based Organizations (CBOs)
- Community Champions spread program information
- Establishing a Community Action Board with people with lived experiences

Results:

- Four CHW hired and trained with 10 clients each on average
- 70 + referrals to PICHC
- Referrals from multiple Community Based Organizations
- Referrals from other TCWH programs
- Open lines of communication between PICHC CHWs and CBOs
- Trust in CHWs professionalism and services
- Identified shared values and goals for client success
- CBOs promote PICHC and CHWs



Job posting for CHW position was shared widely by community partners to reach people with lived experience.



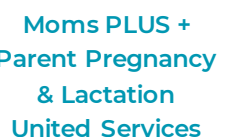
An event held for the community to meet CHWs and ask questions about the PICHC program. A short film about parenting was shown with a panel discussion.



CHWs present at a local community event. An opportunity to meet community members and network with other CBOs present.

Insight From Community Partner Interviews:

- “We brainstorm creative, solutions together for our clients. We think outside the box together.” - 211 Tompkins Cortland
- “We leveraged existing partnerships to share the CHW job posting to reach those with lived experience. Once hired we scheduled meetings with new and existing partners so they could meet the CHWs. -Health Promotion at Tompkins County Whole Health
- “CHWs provide a warm hand off to our staff and help clients access services faster. We collaborate with CHWs to meet client needs.” -Human Services Coalition
- “Meeting with the CHWs in person established trust. We have similar ideas of what success looks like for our clients. This is why we feel confident referring clients to the CHWs.” -Law NY
- “CHWs can transport clients to their WIC appointments and medical appointments, which is extremely valuable to client’s health.” -Tompkins WIC
- “We provide skilled nursing care and the CHWs address psychosocial needs. Our programs complement each other, and we have shared clients.” -Moms PLUS + at Tompkins County Whole Health



Acknowledgements:

Shannon Alvord, Gail Birnbaum, Michelle Hall, Nola Booth, Nicole Roulstin