



**Department
of Health**

New York State Public Health Corps Fellowship Program

Statewide Consortium Meeting

August 20th, 2025 | Zoom

WELCOME

Amber Whiteside

Region 1 Fellowship Program Specialist

Shirley Wild

Region 3 Fellowship Program Specialist



Department
of Health



Agenda

- Welcome & Instructions for Breakout Rooms
- Breakout Room 1
- Debrief Breakout Room
- Breakout Room 2
- Debrief Breakout Room
- Fellow Spotlight: Corin Du Bois
- Fellow Spotlight: Matthew D'Angelo
- Closing Remarks

Breakout Room Instructions

- There will be two rounds of discussion, each lasting 20 minutes.
- The public health expert is there for you to network with.
- Use sample questions to start the conversation.
- Unmute, turn on your camera, and fully participate.
- Be mindful of time. Try to keep responses to questions to under a minute so everyone can participate.
- Participate with an open mind and willingness to learn from each other.

Sample Questions

- Briefly, what do you do in public health?
- How did you get started in public health? Was it intentional?
- How did your first public health job that help you get to where you are now? Are you working on the same public health focus area as before?
- What do you want the new generation of public health leaders to know as they are entering this dynamic field?
- Do you have any job search advice for the NYSPHC fellows who are looking for long-term public health job options?

BREAKOUT SESSION # 1

(20 minutes, followed by 3 minutes to debrief)

Whiteboard Debrief

Discussion:

- How did it go?
- What did you learn?

BREAKOUT SESSION # 2

(20 minutes, followed by 3 minutes to debrief)

Debrief

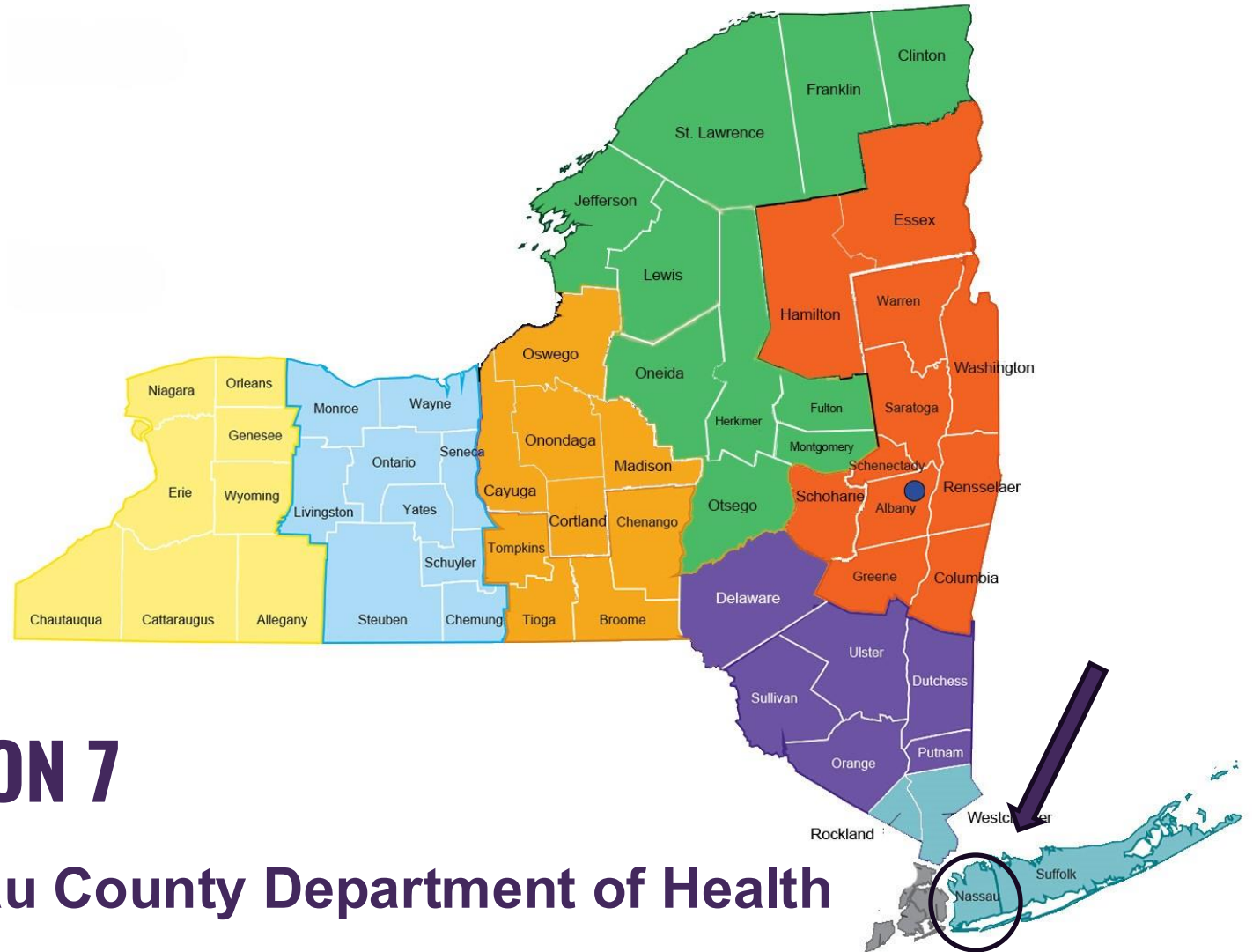
Discussion:

- Did you feel more confident in the second session?
- Have you identified anyone to continue the conversation with following this session?

FELLOW SPOTLIGHTS



Corin Du Bois



REGION 7

Nassau County Department of Health

FELLOW
SPOTLIGHT

The slide features a white background with decorative geometric shapes in shades of blue and orange. These shapes are primarily located in the top-left and bottom-right corners, consisting of overlapping triangles and polygons. A thin blue outline of a square is also visible in the top-left area.

NASSAU COUNTY DEPARTMENT OF HEALTH

BUREAU OF HEALTH ACCESS OVERVIEW

CORIN DU BOIS, PUBLIC HEALTH SPECIALIST III

BUREAU OF HEALTH ACCESS

- Focuses on improving health in underserved and vulnerable communities.
- Uses a **community-engaged, data-informed approach**
- Promotes health equity by:
 - Partnering with FCA, Choice for All, Long Island Health Collaborative, Island Harvest, Cornell Cooperative Extension, Health and Welfare Council Long Island, and many more community-based organizations
 - Partnering with Harmony Healthcare Long Island, Northwell Health, Catholic Health, VNS Health, Nassau University Medical Center, and other health orgs
 - Providing direct services like shelf-stable food, diapers, formula, and health education in various forms
 - Building trust by showing up consistently and respecting lived experience



CORE PROGRAMS AND SERVICES

HEALTH RESOURCE CENTER (H.R.C.)

A one-stop community hub offering a food pantry, diaper and formula bank, and resource referrals to support individuals and families experiencing hardship in Nassau County.



COMMODITY SUPPLEMENTAL FOOD PROGRAM (CSFP)

Through our partnership with Island Harvest, we distribute monthly boxes of nutritious food to qualifying low-income seniors the first four Fridays of each month.



CORE PROGRAMS AND SERVICES

COMMUNITY HEALTH CONNECTIONS

Held on the third Friday of every month alongside CSFP, this senior-focused health fair connects residents with local health services, screenings, and support programs.



POVERTY SIMULATION EXERCISES

Facilitated by the Bureau of Health Access, poverty simulations highlight the daily challenges faced by low-income residents and promote more empathetic, equity-driven service delivery.



CORE PROGRAMS AND SERVICES

WARM REFERRALS

When residents contact us for help, our team provides personalized guidance and direct connections to trusted services, not just phone numbers. We walk them through available options using our knowledge of local resources and the Nassau Navigator platform.

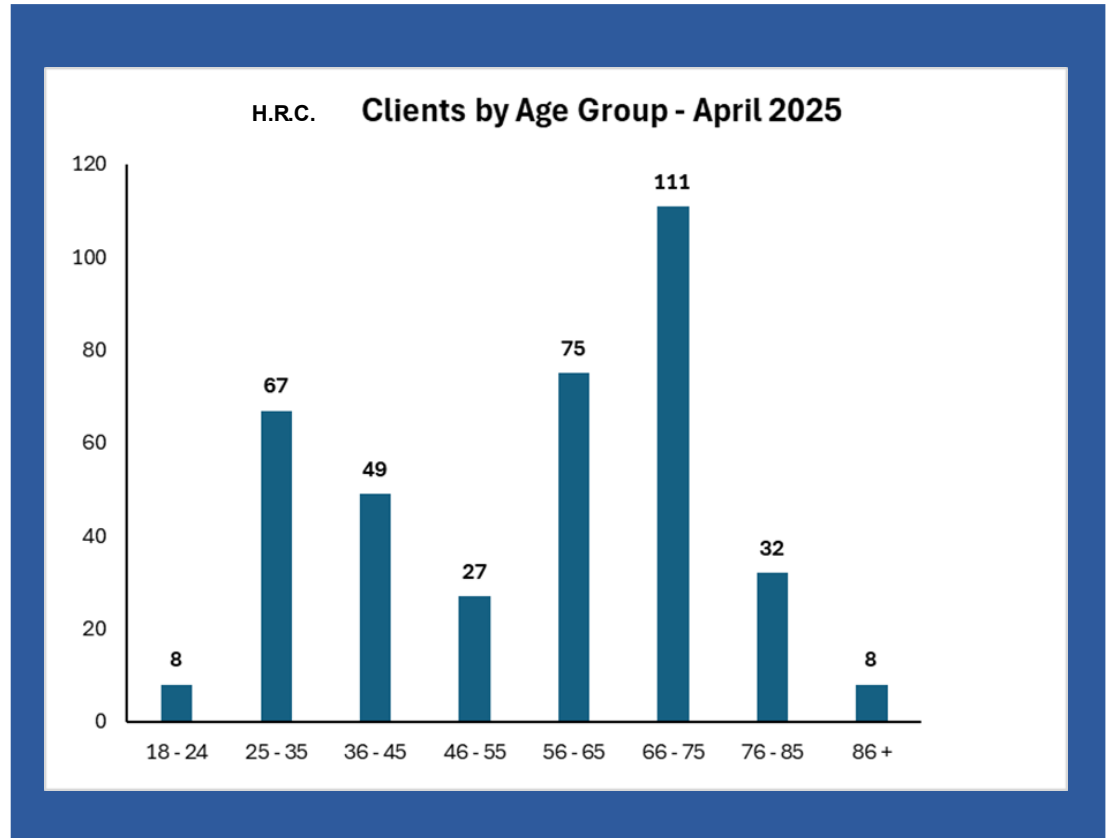
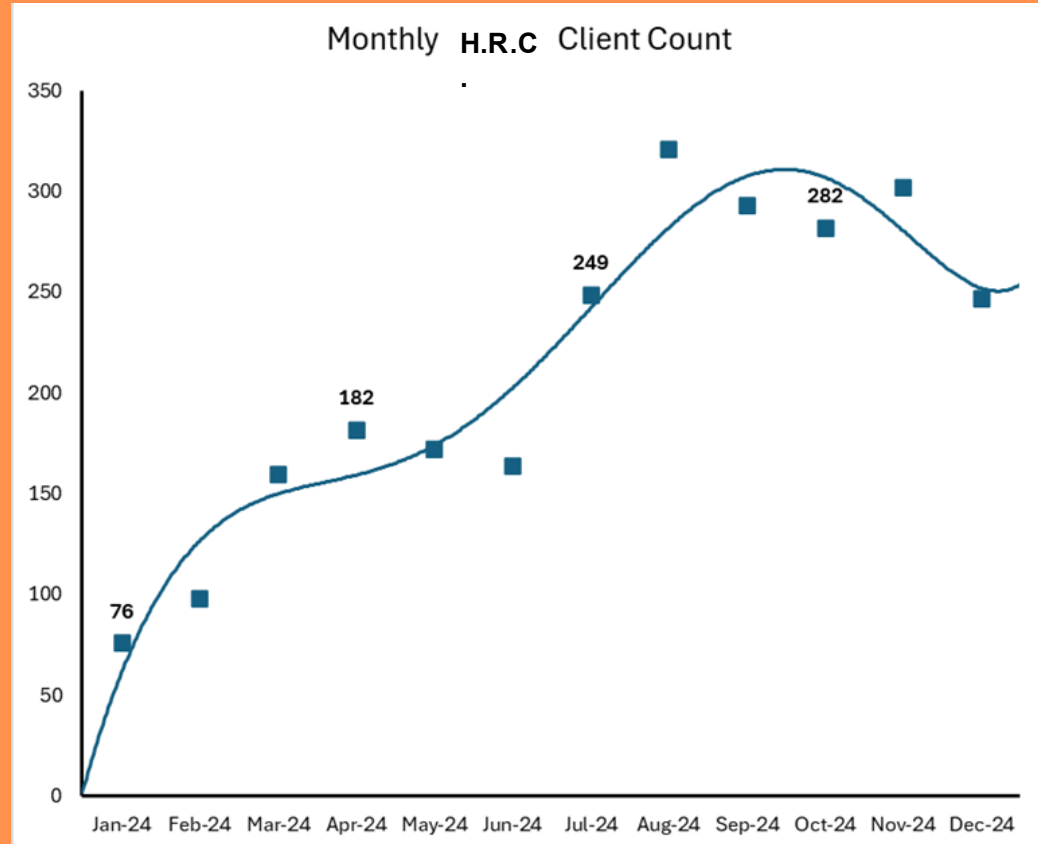


BIENNIAL CONFERENCES

Held every two years, the Bureau of Health Access's Health Equity Conference brings together public health professionals, community leaders, and service providers to explore the impact of social determinants on health outcomes and share strategies to advance equity across Long Island.



REACH AND IMPACT



CONTACT ME!



(516) 572-1364 or (516) 572-1934

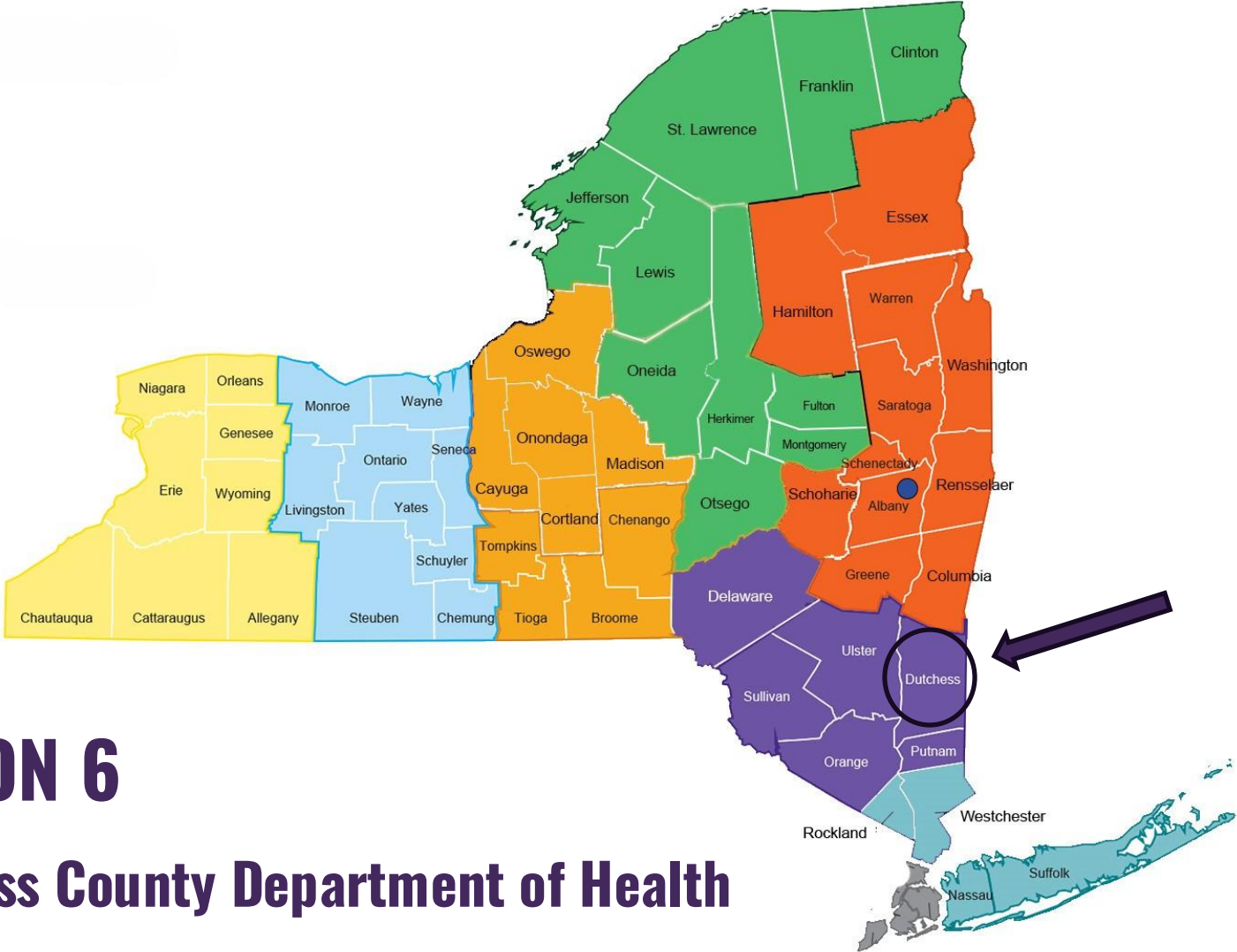


cdubois@nassaucountyny.gov



<http://www.linkedin.com/in/corindubois>

Matthew D'Angelo



**FELLOW
SPOTLIGHT**

REGION 6

Dutchess County Department of Health



Dutchess County Rabies Control Program

Region 6

Matt D'Angelo

NYSPHC Fellow, Rabies Coordinator
Dutchess County Department of Health

August 20, 2025



About Me



Educational Background:

BA in Poli Sci, International Relations and Conflict – UAlbany, SUNY

Albany Law School

MPA, Health Policy - Rockefeller College of Public Policy, UAlbany

Previous Work Experience:

NYSDOH Office of Health Insurance Programs Intern

- Medicaid Redesign Initiative – Medicaid assessment tool

Rockefeller College Student Research Aide

- Public policy research

Albany Law School Health Law Clinic, Student Practice

- Wills, Medicaid /Social Security Appeals

SUNY Research Foundation Graduate Research Aide

- Anti-extremism research, US Dept. of Homeland Security

Rabies Coordinator, Fellowship Duties

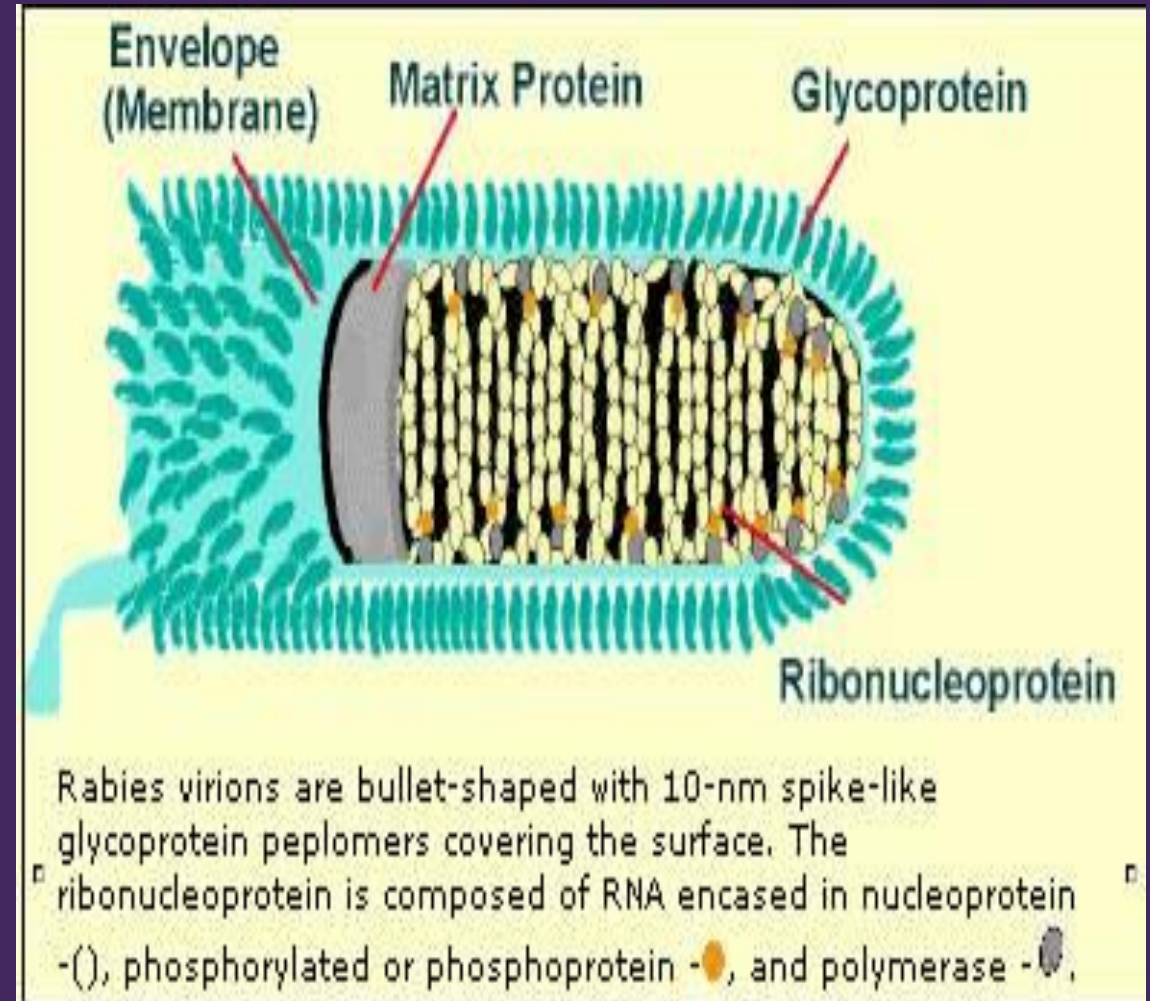


- Field most Rabies-related calls/emails/referrals
- Investigate suspected/actual rabies exposures
- Authorize/prepare specimen submission to NYS Rabies Lab (in partnership with veterinarians)
- Authorize/Recommend Rabies Post-Exposure Prophylaxis (RPEP) treatment (Rabies vaccine)
- Monitor RPEP patient treatment (in conjunction with our Nursing unit)
- Suggest and implement new Rabies program workflows/policies
- Partnership/stakeholder outreach with community members
- Educating the public about Rabies risks

Rabies Virus Overview

What Is It?

- Infectious disease affecting the nervous system
 - Nerves
 - Spinal cord
 - Brain
- Mammalian Virus
- Virtually 100% fatal, no treatment after symptoms present



Rabies Virus Overview

Transmission

Most common modes of transmission:

- Bites
- Scratches where saliva is present
- Mucous membrane/open wound exposures with saliva
- Spinal fluid
- Nervous system tissue



Rabies Vector Species and Other Commonly Infected Animals

Four main vectors in NYS:

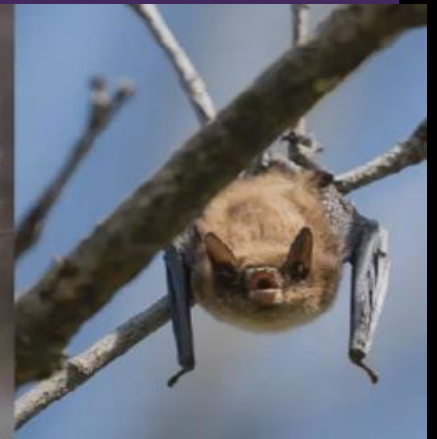
Bats, Raccoons, Foxes, Skunks

Nationally:

Bats, Raccoons, Foxes, Skunks, and Mongooses

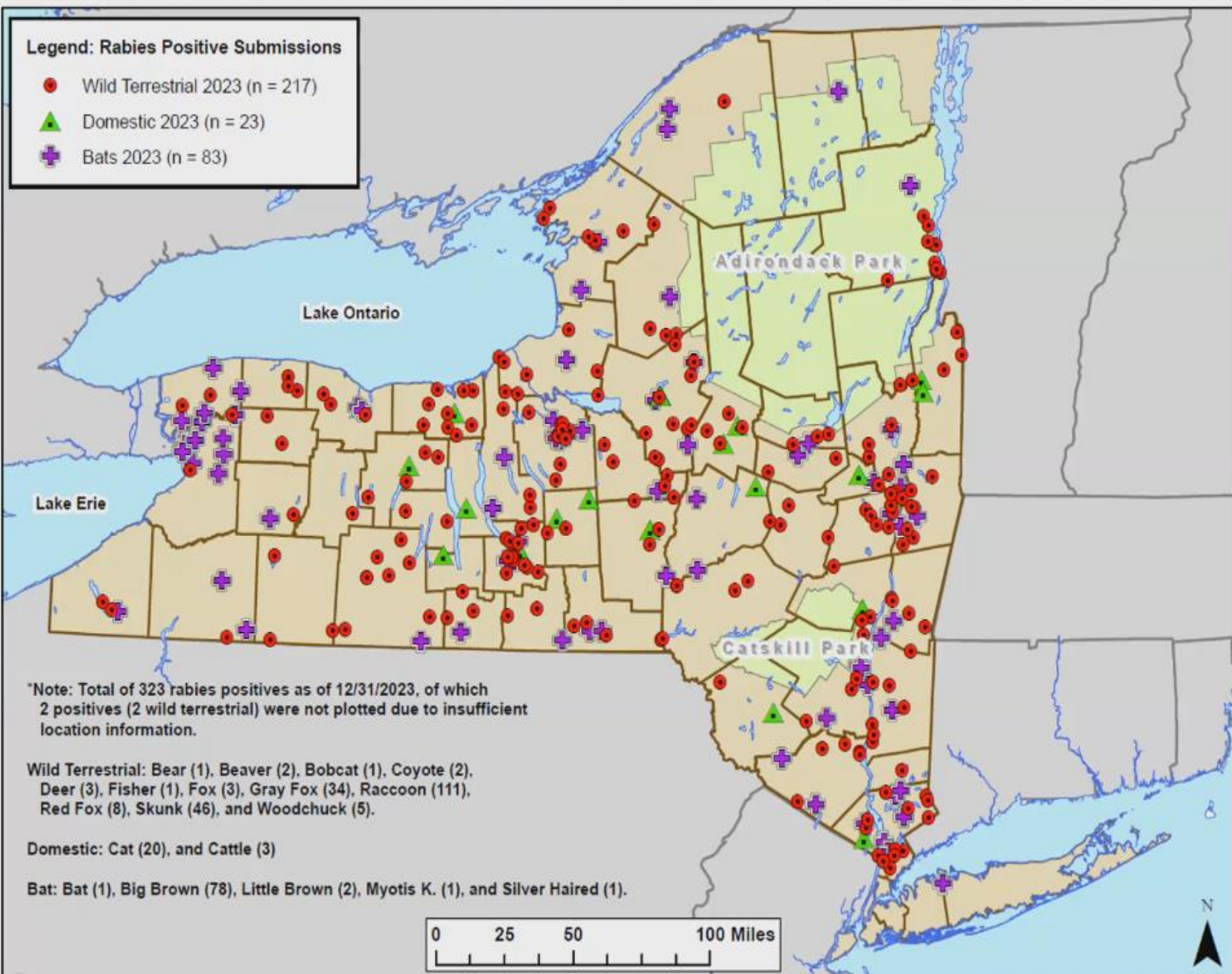
Other encountered infected species:

Coyotes, Woodchucks/Groundhogs, Feral Cats, Horses, Cattle or other farm mammals, Beavers, Opossums, Camels (yes you read that right), Sheep, Bears, Monkeys/primates

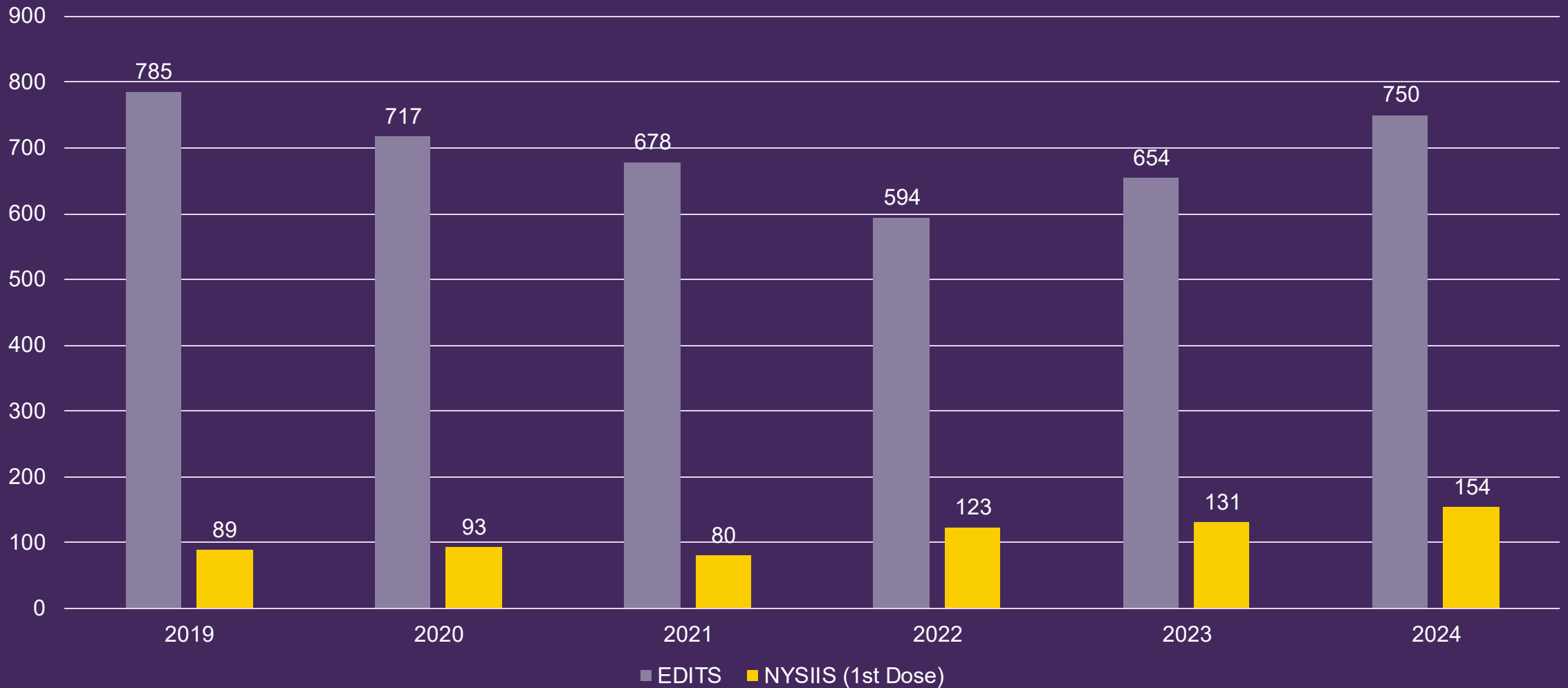


NYSDOH Statewide Rabies Data: POSITIVE SUBMISSIONS

2023 Rabies Surveillance (Positive) - New York State (excluding NYC)

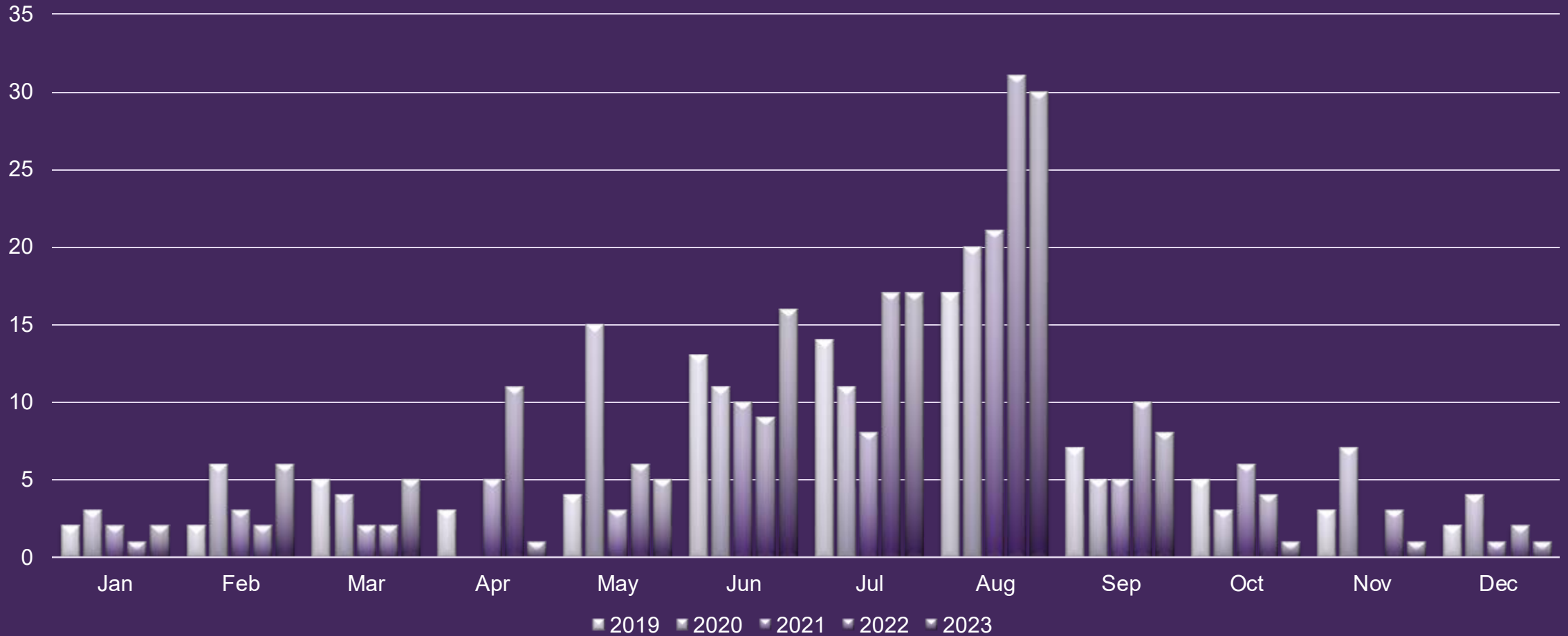


Count of Human Records by Year Received, Dutchess County, EDITS , 2019-2024



Note: EDITS is the digital case log system at DCDOH. NYSIIS is a state immunization tracking database used by medical providers to report immunizations. NYSIIS only contains records of RPEP Treatment, not all exposures. Not all rabies calls are logged into EDITS if they do not result in an exposure investigation.

Count of Rabies Exposures per Month by Case Year, CDESS, 2019 - 2023 (n=504)



Note: 2024 Data is incomplete in CDESS at the time of this meeting (2025). CDESS Data represents RPEP patients ONLY.

Common Fellowship Themes: Public Outreach



Dutchess County Behavioral & Community Health (DBCH) alerts residents that aggressive coyotes have been encountered in the Town of Poughkeepsie/Hyde Park area, including a coyote on the Marist College campus on Tuesday, February 7th.

It is unknown at this time if the animal is rabid. Residents are reminded to AVOID CONTACT WITH WILD ANIMALS. Do not approach and keep pets away as the wild animals may be rabid.

If there is any physical contact between a coyote and a person or pet, Report the incident to DBCH as soon as possible by calling 845-486-3404, 9 a.m.-5 p.m., Mon-Fri. Call 845-431-6465 on nights and weekends.

For more info visit: <http://dutchessny.gov/.../Public-Health-Advisory-Possible...>

COYOTE ALERT



Much of Rabies the program is **alerting** the public about potential exposures, bites, treatment, etc.

Education matters – Rabies investigations/ treatments require urgency and appropriate timing
Smaller animals like Bats can be captured and tested, possibly preventing unwarranted and unpleasant vaccine experiences

Address fear to ascertain the most important details

Countering internet misinformation

Ex. Die within 24 hours, rabies-covid “variants”, “1 bite state” – we are taking your dog, etc. None of which are true.

Common Fellowship Themes: Stakeholder Engagement

- Must involve engagement with stakeholders in all areas of public health
 - Hospitals
 - Urgent care facilities & clinics
 - Doctors' office
 - Veterinarian offices and clinics
 - NYSDEC/DOH
 - Police
 - Animal Control & SPCA
- Members of the public, bite victims, etc.
- Develop strong relationships with each group
- Increase hospital cooperation and feedback to improve RPEP (vaccine) treatment with fewer mistakes
- Ultimate goal – protecting the public, improving patient care





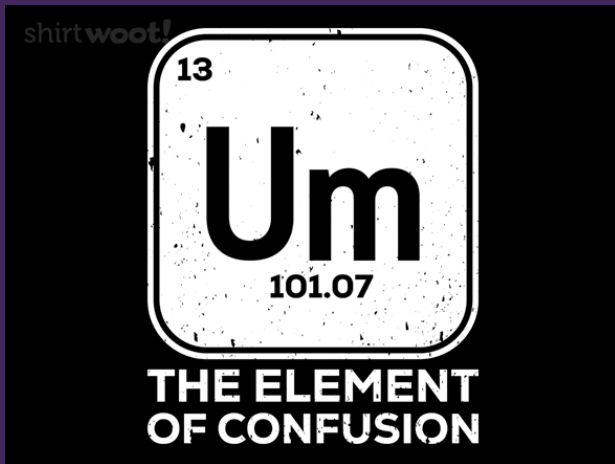
The Best Part of the Rabies Program:

The “Interesting” Cases

- Christmas “Surprise”
- Surfer meets Beaver meets relationship advice



Where can I get more information?



Feel free to contact me:

Matt D'Angelo

Rabies Coordinator
Dutchess County Department of Health
mdangelo@dutchessny.gov
845-486-2712 (Work)

DCODH Rabies
<https://www.dutchessny.gov/rabies>
CDC on Rabies <https://www.cdc.gov/rabies/index.html>
NYSDOH RPEP Algorithm
<https://www.health.ny.gov/publications/3028.pdf>

CLOSING REMARKS

NYSPHC LINKEDIN GROUP

- Stay connected with NYSPHC on LinkedIn
 - Stay updated on public health events
 - Engage with polls and share your insights
 - Keep today's conversation going



Reminder: Employee Assistance Program



Department
of Health

Help for what matters most

Your employee assistance program

Our Employee Assistance Program offers services to help promote well-being and enhance the quality of life for you and your family.

Support and guidance is available for assistance with family and personal issues online at worklife.uprisehealth.com and by phone at 1-800-386-7055.

Help with health	Help with family	Help with legal and financial
<ul style="list-style-type: none"> • Healthy living • Stress management • Mental health • Diet and fitness • Overall wellness 	<ul style="list-style-type: none"> • Parenting support • Child and elder care • Learning programs • Special needs help 	<ul style="list-style-type: none"> • Legal issues • Will preparation • Taxes and debt • ID theft services • Financial tools and assistance • Medical bill negotiation tools

Connect to a counselor for complimentary support services:

Email: eapcounselor@uprisehealth.com

Phone: 1-800-386-7055

Available 24 hours a day, 7 days a week*

Web: worklife.uprisehealth.com

(Access code: worklife)

When calling for assistance please use the following information

Employer - Staffing Solutions Organization

Group Number - G-540112

*Offering hours Monday through Friday 8:00 AM - 5:00 PM. Live services are available outside office hours. The Employee Assistance Program services are provided by uprisehealth, a third-party contractor. Upromise does not provide the level of the Employee Assistance Program. Upromise is not responsible for the cost of services provided by any provider or institution under the program. This information is for informational purposes only. It is not a contract. Only the information provided in the program agreement, terms and conditions, and privacy policy apply. Upromise reserves the right to discontinue the Employee Assistance Program at any time without notice. Legal services provided through the Employee Assistance Program will not be provided in consultation with or preparation for any action against Upromise, uprisehealth or your employer. The Employee Assistance Program is not an insurance benefit and may not be available in all states. Please contact your administrator for more information. © The Guardian Life Insurance Company of America, New York, NY. uprisehealth, uprisehealth.com, Guardian® is a registered trademark of The Guardian Life Insurance Company of America used with uprisehealth written permission. © Copyright 2022 The Guardian Life Insurance Company of America.

Thank you!



Department
of Health